

Accu**CARE**<sup>TM</sup>



# EX<sup>3</sup> Stepper

## Advancing the Standard in Real-Time Planning

For ultrasound-guided brachytherapy and other transperineal procedures, choose CIVCO's EX<sup>3</sup>™ Stepper for direct connection and clear reporting of angular and linear position directly to the treatment planning software. The EX<sup>3</sup> is compatible with leading treatment planning software including Varian Vitesse™, VariSeed™, MIM Symphony™, and BEBIG SagiPlan®.



## SAFER

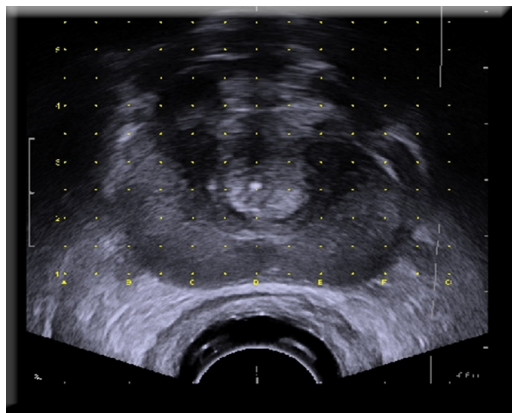
Features removable electronic unit to mitigate cross-contamination risk and reduce cleaning time.

## FASTER

Reports ultrasound probe positioning to treatment planning software offering timely data analysis.

## ACCURATE

Offers smooth rotation and free movement for prostate cancer detection and treatment.



REF. #	PRODUCT DESCRIPTION	QTY.
609-004	EX <sup>3</sup> Stepper - Best Sonalis TRT TriView	1
620-119	EX <sup>3</sup> Stepper - BK Medical 8848, 8558, 8658, E14CL4b (9048)	1
642-443	EX <sup>3</sup> Stepper - GE Healthcare ERB	1
642-514	EX <sup>3</sup> Stepper - GE Healthcare E7C8L	1
644-081	EX <sup>3</sup> Stepper - FUJIFILM Healthcare C41L47RP, EUP-U533, CL4416R1	1
614-119	EX <sup>3</sup> Stepper - FUJIFILM Healthcare UST-672-5/7.5	1
676-177	EX <sup>3</sup> Stepper - Siemens Endo-Pil	1
683-003	EX <sup>3</sup> Stepper - Terason 8B4S, 8BP4	1
658-007	EX <sup>3</sup> Stepper - Mindray ELC13-4 (U/E/s)	1

# Classic Stepper



The Classic Stepper is a lightweight precision stepping device adaptable to a variety of Brachytherapy / Cryotherapy endocavity biplane transducers. The Classic Stepper features a secure centerline detent with angular rotation both counter and clockwise. Also, easy-to-read marking scales are aligned to illustrate base to apex movements of the probe.

- Accurate needle path control and verification using fine adjustment feature
- Transducer rotates easily out of stepper for easy CIVCO endocavity balloon installation and device cleaning
- Grid independently moves to allow a “flush” placement against the perineum improving needle placement within the gland

REF. #	PRODUCT DESCRIPTION	QTY.
620-089	Classic Stepper - BK Medical 8558, 8658, 8848, E14CL4b (9048)	1
609-001	Classic Stepper - Best Sonalis TRT TriView	1
639-055	Classic Stepper - Esaote TRT33 & TLC313	1
642-316	Classic Stepper - GE Healthcare ERB	1
642-512	Classic Stepper - GE Healthcare E7C8L	1
614-092	Classic Stepper - FUJIFILM Healthcare UST-672-5/7.5	1
644-064	Classic Stepper - FUJIFILM Healthcare C41L47RP, EUP-U533, CL4416R1	1
676-114	Classic Stepper - Siemens Endo-Pil	1

# MICRO-TOUCH™ STABILIZERS

The Micro-Touch features stable single-arm fixation with a single-point locking mechanism to instantly fix the stabilizer in the desired position. An adjustable weight-assist feature allows users to achieve a “zero-gravity” feel when positioning the ultrasound probe both in vivo and in vitro.

REF #	PRODUCT DESCRIPTION	QTY.
610-911	Micro-Touch adjustable dual-sided table mount	1



The Micro-Touch LP is specifically designed for use on cystoscopy tables with a fixed fluoroscopy gantry or fixed table. The Micro-Touch LP attaches to tables opposite the gantry and allows users to perform simultaneous or intermittent fluoroscopy and seed implantation while retaining the remarkable versatility of the Micro-Touch ultrasound platform and needle guidance system.

REF #	PRODUCT DESCRIPTION	QTY.
610-912	Micro-Touch single-sided table mount (right side)	1
610-913	Micro-Touch single-sided table mount (left side)	1



The Micro-Touch transportation stand provides a secure and stable method to transport the Micro-Touch stabilizer and corresponding stepper, and to store it when not in use.

REF #	PRODUCT DESCRIPTION	QTY.
610-911S	Micro-Touch transportation stand (dual-sided table mount)	1
610-912S	Micro-Touch LP transportation stand (right side)	1
610-913S	Micro-Touch LP transportation stand (left side)	1



# ACCUCARE™ ACCESSORY KITS

AccuCARE accessory kits are a cost-effective solution, providing all accessories needed to perform ultrasound-guided brachytherapy or other transperineal procedures. Each kit contains 20 complete procedures comprised of a template grid, system drape, endocavity balloon and a gel packet.



REF. #	PRODUCT DESCRIPTION	QTY.
610-2470	Sterile 17GA grid (20) Sterile 81.3 x 91.4cm polyethylene drape (20) Non-sterile 2 x 14cm endocavity balloon (20)	1
610-2469	Sterile 18GA grid (20) Sterile 81.3 x 91.4cm polyethylene drape (20) Non-sterile 2 x 14cm endocavity balloon (20)	1

## TEMPLATE GRID

Sterile, single-use template grids consist of rows and columns of holes spaced 3mm apart (14GA grids) and 5mm apart (17GA and 18GA grids), providing accurate placement of radioactive seeds in predefined areas of the prostate. The single-use grid is sterile and is a cost-effective solution for an infection-controlled environment.

REF #	PRODUCT DESCRIPTION	QTY.
610-905	Sterile 17GA Grid	5
610-906	Sterile 18GA Grid	5
610-977	Sterile 14GA Grid	5

## ENDOCAVITY BALLOON

Single-use, low-profile design of the endocavity balloon features an adjustable inflation control mechanism to control the offset between transducer and prostate for enhanced ultrasound imaging

REF #	PRODUCT DESCRIPTION	QTY.
610-898	Non-sterile 2 x 14cm (.8" x 5.5") endocavity balloon	10

## SYSTEM DRAPE

Single-use drape provides a protective barrier for AccuCARE equipment during transperineal procedures. The clear material allows for easy identification and manipulation of AccuCARE instruments.

REF #	PRODUCT DESCRIPTION	QTY.
610-870	Sterile flat 81.3 x 91.4cm (32" x 36") polyethylene system drape	20

# Multi-Purpose Workstation™

The Multi-Purpose Workstation™ and Stepper is ideally suited for transperineal procedures where a stable platform is required. Available in floorstand or table mount configurations, the workstation features a single-point locking mechanism for rapid transition and a multi-directional base.

Designed for Cryotherapy, Fiducial Marker Placement, Saturation Biopsy, Targeted Biopsy and Volume Studies.



REF #	PRODUCT DESCRIPTION	QTY.
610-974	Multi-Purpose Workstation with adjustable floor stand	1

## FREEHAND MANIPULATION

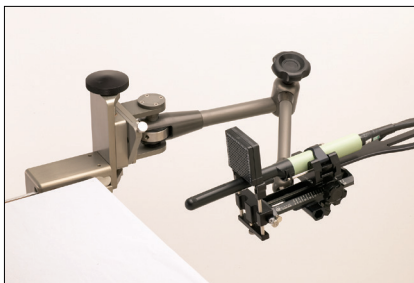
Allows practitioners to manipulate the transducer and lock instantly in any desirable position.

## INDEPENDENT MICRO-ADJUSTMENT

Adjustments can be made in every plane and axis to attain an ideal orientation and starting position.

## VERSATILITY & FLEXIBILITY

Will adapt to any transperineal procedure requiring ultrasound guidance.



## MULTI-PURPOSE WORKSTATION™ LP

Designed for inpatient, outpatient and clinical settings. Ideal for the user who demands the features of a Multi-Purpose Workstation, but requires a rail mount.

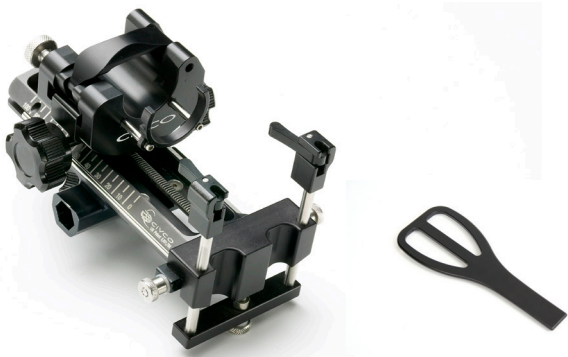
REF #	PRODUCT DESCRIPTION	QTY.
610-975	Multi-Purpose Workstation LP with rail mount	1

# MULTI-PURPOSE WORKSTATION™ STEPPER

Lightweight, advanced stepping device adaptable to a variety of transrectal transducers. The quick-release feature allows the disposable grid to easily attach to stepper during template guided procedures.

- Secure centerline detent with clockwise and counterclockwise rotation
- Accurate linear advancement of the probe in 5mm increments
- Grid independently moves from a back-side location to allow easy placement against the superficial fascia
- Cradle extension allows remote rotation of the probe without compromising sterility

REF #	PRODUCT DESCRIPTION	QTY.
610-1393	Multi-Purpose Workstation Stepper - Mindray 6LB7/6LB7s/6LB7E	1
610-1397	Multi-Purpose Workstation Stepper - SonoScape BCL10-5	1
620-094	Multi-Purpose Workstation Stepper - BK Medical 8558, 8658	1
620-113	Multi-Purpose Workstation Stepper - BK Medical 8808e, 8818, E14C4t (9018)	1
620-117	Multi-Purpose Workstation Stepper - BK Medical 8848, E14CL4b (9048)	1
642-334	Multi-Purpose Workstation Stepper - GE Healthcare ERB	1
642-510	Multi-Purpose Workstation Stepper - GE Healthcare E7C8L	1
644-066	Multi-Purpose Workstation Stepper - FUJIFILM Healthcare C41L47RP, EUP-U533, CL4416R1	1
614-098	Multi-Purpose Workstation Stepper - FUJIFILM Healthcare UST-672-5/7.5	1
676-121	Multi-Purpose Workstation Stepper - Siemens Endo-Pil	1
683-006	Multi-Purpose Workstation Stepper - Terason 8BP4, 8B4S	1
610-1359	Multi-Purpose Workstation Stepper - Exact Imaging EV29L	1





1.800.445.6741 | 319.248.6757 | [CIVCO.com](http://CIVCO.com)